



New ability to document
Scope 3 GHG emissions

Closer integration with FNT
ProcessCenter

New Autorouting and Manual
Routing for Duct and Cable routes

Dynamic UI Templates for Easy
Command Adaption

FNT Command 14

New and improved features and functionalities

The latest long-term release of FNT's flagship software solution for the integrated management of IT, data center and network infrastructures. This update features us-

ability enhancements, performance improvements, and an innovative new functionality that helps you document the carbon footprint of infrastructure-related emissions.

HIGHLIGHTS AT A GLANCE

■ New and improved features

FNT Sustainability to document CO2 and other embodied emissions from operating IT, data center, and network infrastructures; Autorouting and Manual Routing for Duct and Cable routes; display of multiducts in GeoMaps; Tray Management routing; expansion of warehouses with sub-structures; connection of uncut fibers in Junction Box; more flexible UI.

■ Technical improvements

- **BGE Additions:** Incorporate new features for Telco, Signal Management, and Service Asset Management.
- **ReconEngine Upgrades:** Benefit from more configuration options and significant enhancements in handling cable and tray management entities.



■ Usability enhancements

- **Dynamic UI for editable Configuration Data:** A flexible UI allows you to easily edit configuration data.
- **Customizable Templates:** Align templates to your preferences, allowing more parameters of attributes to be changed and static attributes to be relocated, for a better overall user experience.
- **Flexible Attribute Management:** All attributes can now be moved and organized according to your needs.
- **Command ProcessCenter Integration:** Direct communication between Work Order Management and Command to improve performance and usability.

■ Cable Management improvements

- **Improved data model** for conductor
- **Signaltracing:** Enhanced setting to display sub-modules

Highlights of FNT Command 14

FNT SUSTAINABILITY

FNT Sustainability is a new feature that enables organizations to easily document the greenhouse gas (GHG) Scope 3 emissions of their infrastructure elements. It captures CO2 as well as other environmental impact emissions. The ability to document and track these emissions is a critical need for organizations that prioritize corporate sustainability reporting and who want to be ESG and CSRD compliant.

FNT Sustainability features a matrix data structure that conforms to the EPD definitions of ISO 14025 to hold actual emission values.

FNT Sustainability: Environmental impact indicator matrix adhering to ISO norm 14025

A predefined FNT Analytics Dashboard that generates BI insights into the overall Scope 3 footprint to analyze trends is also available with an FNT Analytics installation.



Full analytics dashboard shows high level success in CO2 footprint reduction and allows for drilling down into any dimension for details

ADVANCED TELCO FEATURES

Enhanced Device Search

New filters allow users to identify devices based on specific service types, optimizing the process of creating bearers, unrouted paths, or trails. This makes service configurations more efficient and accurate.

Context-Sensitive Connected Service Report

The Connected Service Report now offers enhanced accessibility. It can be executed directly from various entities such as devices, zones, cables, services, and ports, across modules like Easy Search, Telco, Connections, Object Management, and more.

Logical Port Migration

Subdivided logical ports can be transitioned into stand-alone ports. The link to their parent can be removed, allowing them to function as normal logical ports. Additionally, cards/devices can now be removed, deleted, or transferred to another device if aggregated.

Network Planning Improvements – Bearer & Unrouted Path

Bearers can now be moved in Planning Mode to streamline network restructuring, and new functionality supports unrouted path management.

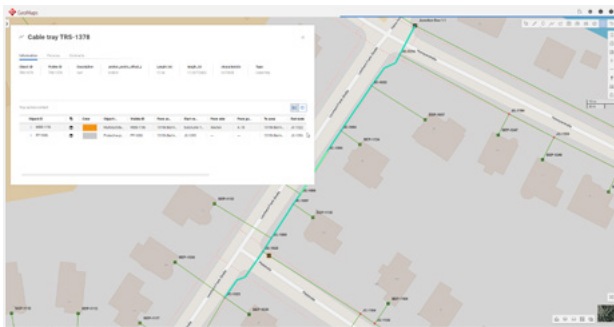
IP-Based Service Management

Enhanced representation of IP services, allowing IP addresses and interfaces to be allocated directly to logical ports. Allocations can be viewed and edited from the IP address.

FNT GEOMAPS IMPROVEMENTS

Display Multiducts

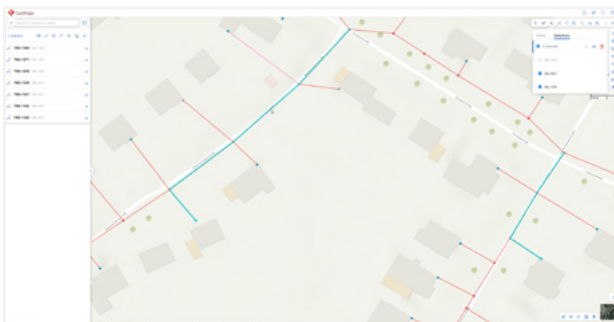
Manage fiber with multiducts by displaying on routes on maps. Choose between regular ducts and multiducts using the "open with" functionality, displaying the state-of-the-art Duct equipment for Fibre Network Infrastructure on a map.



State-of-the-art Duct equipment for Fibre Network

Save Selections

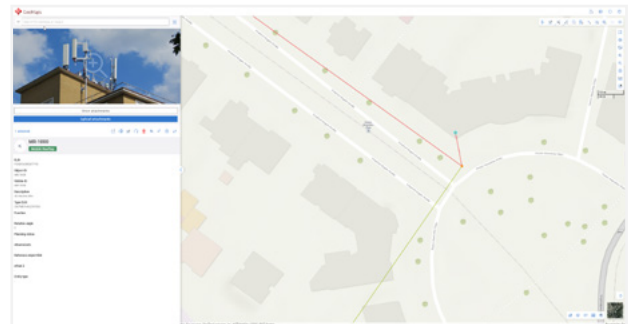
Save and manage a list of selected objects. Saved selections are stored as bookmarks and can be accessed and displayed on the map any time. Display multiple selections at the same time, eliminating the need to switch back and forth between GeoMaps and Command.



Save and manage the list of selected objects in GeoMaps as a "Selection" bookmark

Sidebar Usability

Per user feedback, the sidebar is displayed and collapsed on demand. Sidebar can be enlarged if working with attachments and extensive detailed information of selected objects.

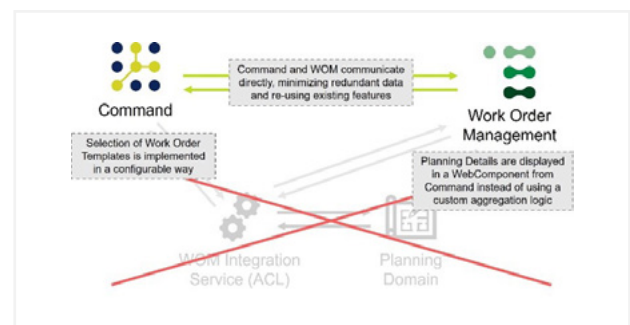


Collapsible sidebar

GENERAL SYSTEM IMPROVEMENTS

Closer Integration with ProcessCenter

A more direct communication between Work Order Management and Command streamlines work order management and significantly increases performance. Furthermore, the creation of new Requests directly from a specific Command object is now possible in order to simplify Use Cases



Possibility to create a new request directly from a specific Command object

ReconEngine Upgrades

Many more configuration options are available, including configurable DeltaActions, the ability to update a route for ducts and multiducts without the need to recreate them, additional entities such as splice cassettes and splitter, and new fiber actions for the junction box. Telco Planning has also been added to enable planned routing changes as an action in ReconEngine.

Business Gateway Entities

New features for Telco, Signal Management, and Service Asset Management available.

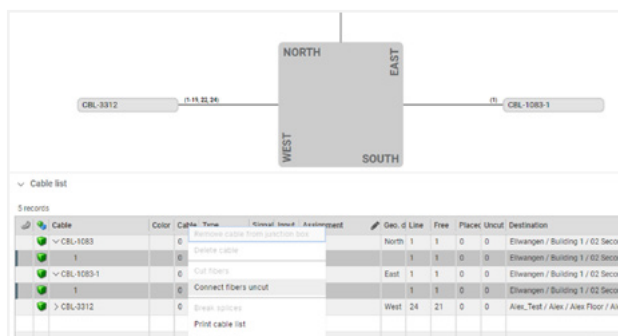
FEATURE IMPROVEMENTS

Dynamic UI Templates

Flexible new UI enables easy editing of configuration data. Attributes are no longer statically coded on the XML template but are dynamically configured using Entity Manager. This means formerly static attributes have more configuration options, and unused attributes can be removed. All attributes can be moved and organized according to user needs.

Junction Box

A fiber which was incorrectly documented as cut has now the option to be documented in the status “uncut” again. Uncut fibers can be connected in a box. The splice plan can be exported in Tyco, a standardized and known format.



Connection of uncut fibers in Junction Box

Inventory Management

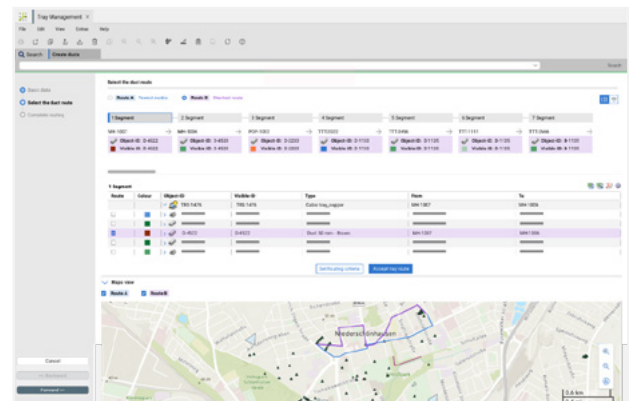
Warehouses can be divided into substructures and devices assigned for better organization. The hierarchical warehouse structure enables more granular mapping. Devices stored in sub-warehouses can be displayed in the higher-level warehouses.

Tray Management

Speed up and simplify Routing for Cables and Ducts with new Autorouting and Manual Routing functionality when building the Digital Twin of the Network Infrastructure. Supporting network expansions and providing the foundation for better decisions in fulfillment and operational tasks.

Autorouting for Duct and Cable routes

Set or change routing criteria at any time, route overview and segment details are separated, easy comparison of two routes.



Autorouting for Duct and Cable routes

ELEVATE YOUR INFRASTRUCTURE MANAGEMENT WITH FNT COMMAND 14.2

FNT Command 14.2 offers powerful tools and enhancements that provide robust support for data center, network and IT infrastructure management, planning, and documentation. Upgrade today to experience these new features and take your operations to the next level.