



Install and integrate georeferenced data with the FNT Command Platform

Introduction to application-specific geo-visualization

Access and use user-specific maps

Apply and use exact coordinate reference systems

## FNT ValuePack Start-Up Package FNT GeoMaps

### Integrating FNT GeoMaps with the FNT Command Platform

Managing the large number of diverse assets and resources in the telecommunications network is challenging. Network operators need to run, upgrade, and expand their operations all at once. Because of these challenges, efficient management is one of the most important requirements for professionally operating a modern network.

FNT GeoMaps offers an important added value in the field of cable, duct, and tray management. It delivers georeferenced visualization to provide network operators with a complete and detailed overview of the existing network infrastructure and facilitate expansion planning and network optimization. The attributes of the FNT Command Platform are extended to encompass additional relevant objects that can be spatially referenced via nodes and tray sections. Network-related geodata is located, visualized, or symbolized via FNT's underlying data model. These network infrastructures can be created and edited by different users directly in the web browser.

The FNT ValuePack Start-Up Package FNT GeoMaps guides you through the FNT GeoMaps implementation process of this Esri-based geoinformation system. Upon completion, FNT GeoMaps will be installed, configured, and integrated with the platform.

Our Start-Up Package leverages best practices developed from numerous successful projects. We have extensive experience setting new users up to realize the benefits of their investment as quickly as possible. FNT uses a procedure model to transfer knowledge, supplemented by supporting services to ensure users are well prepared to realize maximum value from FNT GeoMaps.

**Visualization:** FNT's Start-Up Package equips users to optimize the visual cartographic representation of the solution's symbols and backgrounds for various use cases. Multiple map views can be provided and viewed in parallel. This ensures the best possible readability and usability of the resulting map views.

ANALYSE

SCOPE

DESIGN

PREPARE

IMPLEMENT

GO LIVE

OPERATE





## STARTER

- 1 WebMap
- Different Esri-Basemaps
- Default coordinate systems
- Default symbols



## EXTENDED

- 1 WebMap
- Different Esri-Basemaps
- Choose one coordinate system
- Individual configuration of standard symbols
- Extension to option 3D
- 1 webscene
- Different esri base maps
- Individual configuration of 3D standard symbols
- Setup of a building with up to 5 floors (floor grid and labeling)



## PREMIUM

- 5 mandator-specific WebMaps
- Different Esri-Basemaps
- Choose three coordinate systems
- 12 custom icons in symbol library
- 15 thematic layers
- Individual attribute presentations as pop-up or sidebar
- Customer workshops
- Extension to option 3D
- 5 mandator-specific webscene
- Different esri base maps
- Individual configuration of 3D standard symbols
- Setup of up to 5 buildings in total, each with up to 5 floors (floor grid and labeling)

Three FNT ValuePack versions to choose from

Optionally, it is possible to visualize the data in 3D and thus display the spatial context in its overall view. (For prerequisites, see statement of work: The data enable visualization in 3D - i.e. have Z-values).

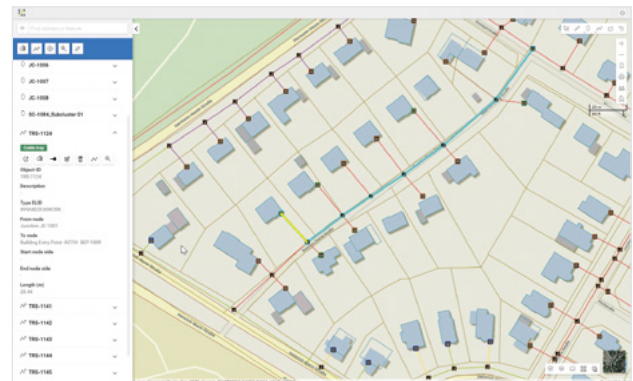
**Integration:** FNT's Start-Up Package FNT GeoMaps prepares standard integration processes for ongoing interaction with the FNT Command Platform. This will establish the link between geoinformation with other relevant data of network operation to allow for more efficient management of the infrastructure. It will also ensure automatic updates to the central documentation in a continuous system. This avoids unnecessary duplicate data maintenance effort and redundancies.

**Map and Digitization:** Spatially documented objects can be displayed in FNT GeoMaps, overlaid on various map backgrounds. Cables are easily assigned to the corresponding route segments and thus visualized as layers. Contents of trays can be displayed in FNT GeoMaps or in the FNT Command Platform, with all ducts, cables and hierarchical structures. New trays and knots, such as shafts or building entry points, can also be digitized directly in the map view. FNT Start-Up Package FNT GeoMaps supports users with the initial setup of this important functionality.

**Workshop:** Workshops are an opportunity for customers to work directly with FNT's experienced consultants to exchange information and set the customer up to realize maximum benefit from their new system. Customers share insight into their geodata and the associated use cases. Once targets are set, FNT implements the customer-specific configuration that was jointly defined. Workshops are included in the Premium version.

## EXISTING GEODATA TRANSFER

When upgrading to FNT GeoMaps from FNT WebGIS, FNT Start-Up Package FNT GeoMaps allows for the one-time transfer of existing geodata to the FNT GeoMaps system as an additional option.



## VALUEPACK VERSIONS

The ValuePack is available in three levels. Choose the one that best meets your individual needs:

The **"Starter"** pack is an entry level service package. It covers the basic functional configuration. Customers can independently implement further adaptations as needed.

With the package **"Extended + Inhouse 3D"** an additional 3D map view is provided and a building is taken over for 3D display.

The "**Premium**" level includes an intensive workshop. It covers extensive configuration and customization. All settings are addressed, so productive work with the new system can commence immediately.

As an extension to this, "**Premium + Inhouse 3D**" offers mandantor-specific 3D map views and the adoption of multiple buildings.

## **SUPPLEMENTAL TRAINING**

Product trainings are an extension of the FNT ValuePack Start-Up Package FNT GeoMaps. These ensure users acquire the knowledge to use the solution through practical exercises and high-quality educational training methods. These include the two optional trainings, "FNT GeoMaps User Training" and "FNT GeoMaps Administrator".

The FNT ValuePack Start-Up Package FNT GeoMaps can be combined with other standardized services. We recommend "FNT ValuePack GIS Migration Scoping" as a useful complement.

### **FNT START-UP PACKAGE FNT GeoMaps ADVANTAGES AT A GLANCE:**

- Avoid entry-level errors
- Be prepared with reliable operational readiness
- Assurance the system is configured according to your specific needs
- Individualized map representations ready for immediate use
- Spatial data dimension adds significant value from the start